

# *Sustainable manure and nutrient management for reduction of nutrient loss in the Baltic Sea Region*

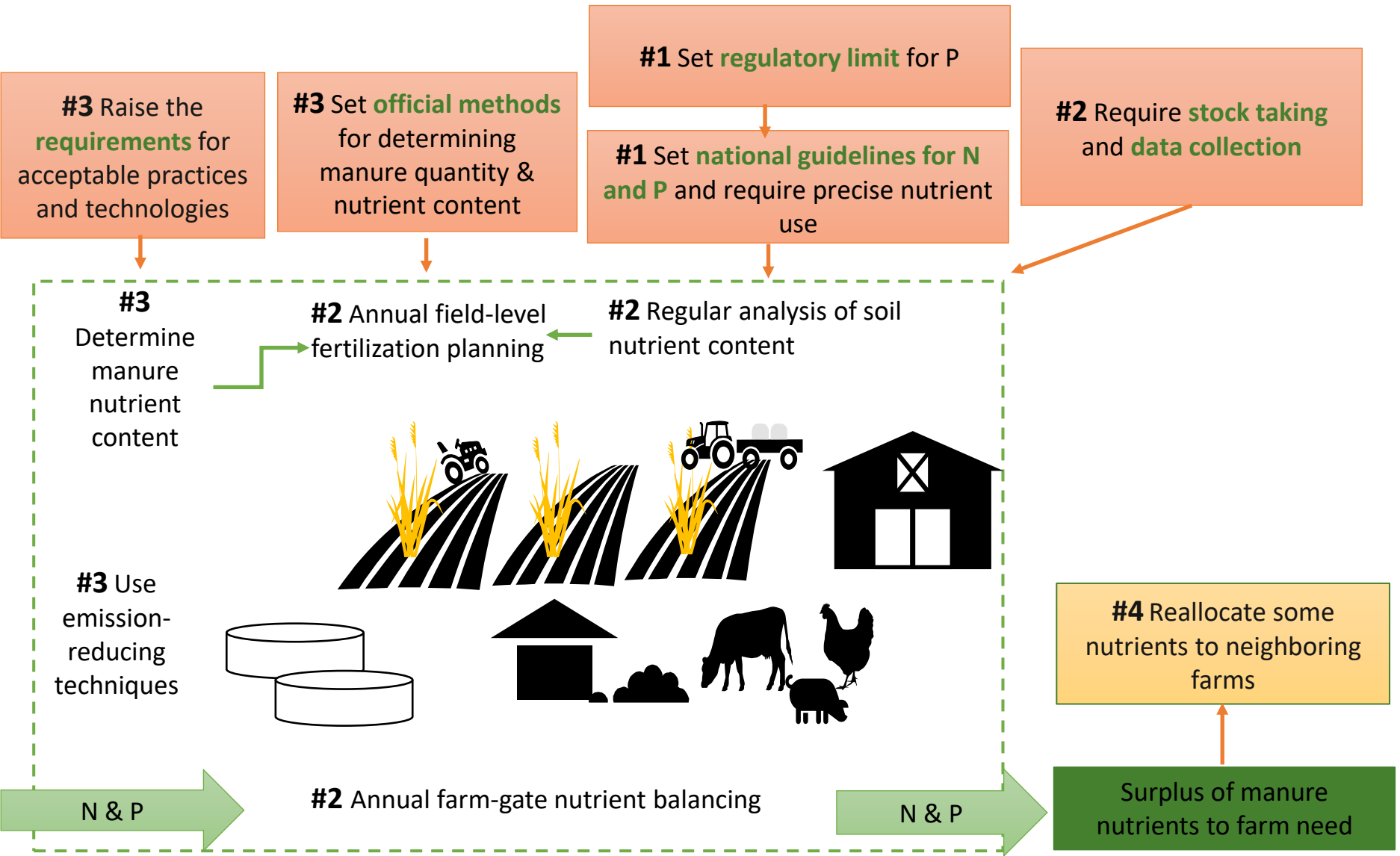
*Minna Sarvi,  
Natural Resources Institute Finland (Luke)*

More information: [www.balticsumanu.eu](http://www.balticsumanu.eu)

→ Reports

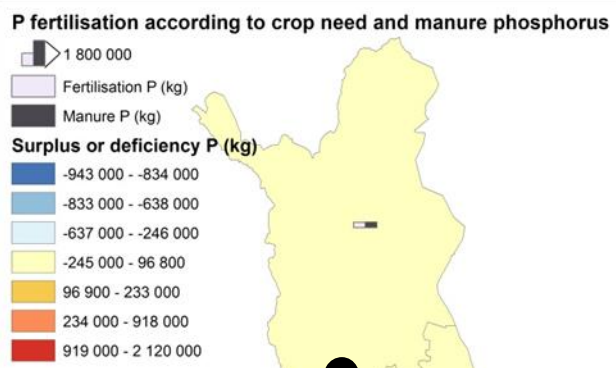
- SuMaNu reports
- SuMaNu policy recommendations

# Farm level



# Regional level

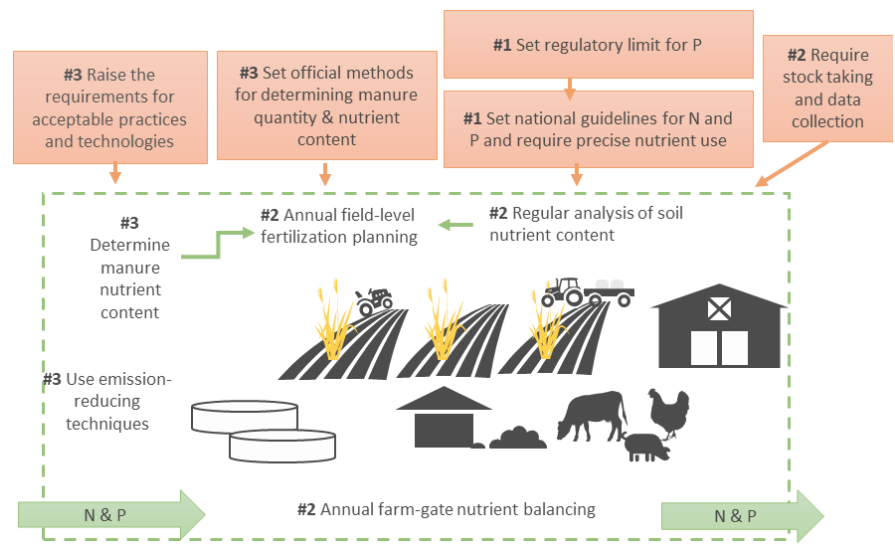
**#4** Take account of **national and regional supply of manure nutrients and compare to fertilization need to set targets for nutrient recycling**



**#4** Reallocate excess manure nutrients as recycled fertilizer products via manure processing

- #4** Support use of recycled manure-based fertilizer products
- #4** Support production of recycled manure-based fertilizer products
- #5** Ensure safety of recycled manure-based fertilizer products

# Farm level



**If regional surplus of manure nutrients** +

Surplus of manure nutrients to farm need

**#4** Reallocate some nutrients to neighboring farms